

# Exemplar Canadian Focus Portfolio

## Management Report of Fund Performance

EXEMPLAR  
PORTFOLIOS

### **EXEMPLAR CANADIAN FOCUS PORTFOLIO SEMI-ANNUAL MANAGEMENT REPORT OF FUND PERFORMANCE**

For the period ended June 30, 2015

This semi-annual Management Report of Fund Performance contains financial highlights but does not contain the complete unaudited semi-annual financial statements for Exemplar Canadian Focus Portfolio (the "Portfolio"). If you have not received a copy of the unaudited semi-annual financial statements with the Management Report of Fund Performance, you may obtain a copy of the unaudited semi-annual financial statements, at no cost, by calling 877.327.6048, by writing to us at Arrow Capital Management Inc., 36 Toronto Street, Suite 750, Toronto, Ontario, M5C 2C5 or by visiting our website at [www.arrow-capital.com](http://www.arrow-capital.com) or SEDAR at [www.sedar.com](http://www.sedar.com).

Security holders may also contact us using one of these methods to request a copy of the Portfolio's unaudited semi-annual financial statements, proxy voting policies and procedures, proxy voting disclosure record, or quarterly portfolio disclosure relating to the Portfolio.

#### **Forward-Looking Information**

This Management Report of Fund Performance contains forward-looking information and statements relating, but not limited to, anticipated or prospective financial performance and results of operations of the Portfolio. Forward-looking information involves known and unknown risks, uncertainties and other factors that may cause actual results, performance or achievements to be materially different from any future results, performance or achievements expressed or implied by the forward-looking information. For this purpose, any statements that are contained herein that are not statements of historical fact may be deemed to be forward-looking information. Without limiting the foregoing, the words "believes", "anticipates", "plans", "intends", "will", "should", "expects", "projects", and similar expressions are intended to identify forward-looking information.

Although the Portfolio believes it has a reasonable basis for making the forecasts or projections included in this Management Report of Fund Performance, readers are cautioned not to place undue reliance on such forward-looking information. By its nature, the forward-looking information involves numerous assumptions, inherent risks and uncertainties, both general and specific, which contribute to the possibility that the predictions, forecasts and other forward-looking statements will not occur. These factors include, but are not limited to, those associated with the performance of the equity securities market, expectations about interest rates and factors incorporated by reference herein as risk factors.

The above list of important factors affecting forward-looking information is not exhaustive, and reference should be made to the other risks discussed in the Portfolio's filings with Canadian securities regulatory authorities. The forward looking information is given as of the date of this Management Report of Fund Performance, and the Portfolio undertakes no obligation to publicly update or revise any forward-looking information, whether as a result of new information, future events or otherwise.

## **Management Discussion on Fund Performance**

### **Investment Objective and Strategies**

The investment objective of the Exemplar Canadian Focus Portfolio is to achieve superior capital appreciation over both short and long-term horizons primarily through the selection and management of a concentrated group of long and short positions in Canadian equity securities and equity derivative securities.

The Portfolio invests predominantly in large and mid capitalization companies. The Portfolio may also invest in bonds and other debt instruments if warranted by financial conditions. The Portfolio does not specialize in any one industry other than to concentrate investments in those industries that offer the best opportunities for exceptional returns at each stage of the economic and market cycle. The Portfolio may also invest in options, including put options or call options either in respect of a specific security or in respect of a stock exchange index as a means to reduce volatility.

The Portfolio engages in short selling of securities which the investment advisor (as defined below) believes are overvalued, especially securities of issuers with deteriorating fundamentals and weak balance sheets. Short positions of index securities such as exchange traded funds may also be employed for capital preservation and hedging purposes. Short positions in total may not exceed 40% of the Net Asset Value of the Portfolio. The Portfolio may hold cash or invest in short-term securities for the purpose of preserving capital and/or maintaining liquidity, based upon the investment advisor's ongoing evaluation of current and anticipated economic and market conditions. The Portfolio may also invest in foreign securities of the same type and characteristics as described above. The Portfolio may invest in derivatives for hedging and non-hedging purposes as permitted by applicable securities laws. The Portfolio may enter into securities lending, repurchase and reverse repurchase transactions to generate additional income or as a short-term cash management tool.

### **Investment Risk**

The risks of investing in the Portfolio remain as stated in the Portfolio's prospectus dated May 22, 2015.

The Portfolio is suitable for clients seeking medium to long-term growth (through capital appreciation) who have a moderate risk tolerance level.

### **Results of Operations**

For the six months ended June 30, 2015, Series A Shares of the Portfolio gained 5.1% (9.0% - 2014) while the Canadian benchmark, the S&P/TSX Total Return Index, posted a gain of 0.9% (12.9% - 2014) for the same period. Please refer to the Past Performance section for the performance of the other Series. The performance of the other Series offered by the Portfolio differs from Series A largely because of varying levels of expenses charged to each series, as explained in the Management Fee section.

As of June 30, 2015, 68.2% (85.1% - 2014) of the Portfolio's net assets (where short positions are netted against long positions in each category) were invested in Canadian equities, 1.7% (0% - 2014) in Canadian bonds, 11.0% (5.0% - 2014) in U.S. equities, 0% (1.8% - 2014) in global equities and 19.3% (8.1% - 2014) in cash.

Price of oil has been in decline ever since OPEC announced the decision to defend its market share at the expense of the oil price at the November 2014 meeting. It became clear to investors that the Canadian economy would be a laggard, as demand for Canadian resource exports would suffer not only as a result of the worldwide oil glut, but also because of the anemic global economic environment. Thus for 2015, we have positioned the portfolio to take advantage of the superior U.S. economic prospects. We increased exposure to U.S. companies with attractive domestic growth, as well as searched for Canadian companies with significant business exposure to the U.S. and the stronger north European economies. The most profitable holdings in the first half of 2015 were Valeant Pharmaceuticals (with a 67% increase), Constellation Software (with a 44% increase) and Element Financial (with a 40% increase). All three companies derive significant profits from the U.S. and fit exceptionally well into our other dominant themes of 'Industry consolidation' and 'Growth by acquisition'. We continue to pursue these themes as antidotes to glacial global growth. In fact, Element Financial just recently announced a game-changing deal by acquiring most of General Electric's fleet management business. This acquisition will increase Element's exposure to operations in the U.S., Mexico, Australia and New Zealand, and will continue Element's transformation into a global financial player.

Our call for a weak Canadian economy in 2015 proved correct, as depressed energy prices caused companies to postpone or rethink many projects and thus scale back capital spending and employment - mostly in Alberta and Saskatchewan. The unexpected win by the NDP party in the Alberta election exacerbated the already difficult environment by creating uncertainty about future government policies. Even our most pessimistic forecast failed to foresee the debilitating effects the exceptionally cold winter inflicted on the North American economy. We are seeing many signs that the U.S. is returning to healthy economic growth, but have no such hopes for Canada. Canada will not be able to resume growth without a recovery in commodity prices. Currently there is little hope for such recovery. China's economy has been decelerating and we expect it will take several years before China's appetite for commodities returns. European prospects are certainly improving, but the unresolved structural problems will only allow for sporadic growth in the region for years to come. When we consider the endless list of geopolitical problems facing the world, it becomes impossible to predict anything but tepid economic prospects.

As predicted last year, we are seeing divergent monetary policies across continents. While Euro-area and China pursue stimulative policies to help boost their underachieving economies, the single most important issue facing U.S. markets is the timing of Federal Reserve Chair Yellen's process of interest rate normalization. Market performance has mirrored this divergence. Equities of the leading European economies have outperformed the range bound U.S. Indexes, as investors begin to digest the consequences of rising interest rates in the U.S. We are confident that U.S. equities will resume their climb once the rate liftoff is in the rear view mirror - most likely in the fourth quarter this year.

Our defensive position has allowed the Portfolio to outperform Canadian equities in the first half of 2015. Lack of exposure to resource stocks and heavy reliance on defensive sectors proved to be the right formula. The Portfolio benefited from being overweighed in the best performing Health Care sector, while having the single largest exposure to the next-best performing Consumer Discretionary sector. Focusing on companies able to grow either organically or by acquisitions and giving preference to companies with significant operations outside Canada has also been rewarding. The Portfolio continues to carry larger than usual cash position, which we deploy during market corrections by picking away at some of our favorite stocks. This strategy has been helpful in mitigating market volatility.

### **Recent Developments**

On December 2, 2013, Arrow Capital Management Inc. ("Arrow" or the "Manager") acquired all the outstanding shares of BluMont Capital Corporation ("BluMont"), resulting in a change of control of BluMont. On April 1, 2014, Arrow and BluMont amalgamated, continuing under the name "Arrow Capital Management Inc.". At a special meeting of shareholders on November 27, 2013, the shareholders of the Portfolio approved a change of manager from BluMont to Arrow.

### **Related Party Transactions**

As of June 30, 2015, Arrow held 535 Series A Shares and 4,821 Series F Shares of the Portfolio, with a market value of \$113,342. This represents 0.1% of the net assets of the Portfolio.

### **Management Fees**

Arrow receives a monthly management fee (the "Management Fee") subject to HST (and any other applicable sales taxes), calculated as a percentage of the Portfolio's net asset value and is accrued daily and payable monthly. The Management Fee rate applicable to the Portfolio is 1.65% per annum in respect of Series A Shares, 1.95% per annum in respect of Series L Shares and 0.65% per annum in respect of Series F Shares. Shareholders of Series I Shares of the Portfolio pay a negotiated management fee. For the period ended June 30, 2015 the total Management Fee equaled \$545,676 (2014 - \$521,106). The management fee is paid in consideration of investment management and administration services. No breakdown of such services was specified in the Management Agreement. From this Management Fee, the Manager pays fees to the investment advisor (Arrow, in its capacity as such) who provides portfolio management services to the Portfolio. A portion of the Management Fee paid by the Portfolio is for trailer fees paid to dealers whose clients hold shares of the Portfolio. The trailer fees are a percentage of the net asset value of the Portfolio, calculated and payable monthly. The table below outlines the Portfolio's annual Management Fees and trailer fees.

	Series A Shares	Series F Shares	Series L Shares	Series I Shares
Management Fees <i>(Annual Rate %)</i>	1.65%	0.65%	1.95%	Negotiable
Trailer Fees <i>(rate as % of Management Fees)</i>	40.3%	-	2.3%	-

In addition, the Portfolio pays Arrow performance fees ("Performance Fees") equal to 20% of the amount by which the Portfolio return in a year is in excess of the high water mark (the "High Water Mark"), and no Performance Fee is payable unless a hurdle rate of 6% is achieved in that year. Performance Fees will be payable in all circumstances where the performance of the Portfolio exceeds that of its High Water Mark and its hurdle rate. Please refer to the Portfolio's long form prospectus dated May 22, 2015, for further details relating to Performance Fees. The High Water Mark set as of January 1, 2015 was \$19.01 for Series A Shares, \$20.17 for Series F Shares and \$13.39 for Series L Shares. For the period ended June 30, 2015, the total Performance Fees equaled \$1,178,960 (2014 - \$1,428,851). Performance Fees are calculated and accrued daily such that, to the extent possible, the share price each day will reflect any Performance Fees payable as at the end of such day. Performance Fees for the Portfolio will be calculated and accrued each day, but will only be payable following the end of the fiscal year of the Portfolio based on the actual annual performance of the Portfolio.

The Manager incurs operating expenses on behalf of the Portfolio and charges these expenses to the Portfolio. For the period ended June 30, 2015, the Manager did not absorb any operating expenses associated with the Portfolio (2014 - \$14,371).

### Financial Highlights

The following tables show selected key financial information about the Portfolio and are intended to help the reader understand the Portfolio's historical financial performance for the past five years. This information is derived from the Portfolio's financial statements, and is represented net of expenses which have been charged to the Portfolio.

<b>SERIES A - NET ASSETS PER SHARE</b>					
<b>For the period ended June 30, 2015 and for the years ended December 31,</b>					
	2015	2014	2013	2012	2011
<b>Net Assets, beginning of period<sup>1</sup></b>	<b>\$ 19.01</b>	<b>\$ 17.27</b>	<b>\$ 14.08</b>	<b>\$ 13.50</b>	<b>\$ 14.66</b>
Increase (decrease) from operations:					
Total revenue	0.25	0.27	0.36	0.42	0.23
Total expenses	(0.53)	(0.92)	(1.19)	(0.35)	(0.37)
Realized gains (losses) for the period	0.74	1.70	0.23	0.13	0.57
Unrealized gains (losses) for the period	0.51	0.96	4.00	0.65	(1.57)
<b>Total increase (decrease) from operations<sup>1</sup>:</b>	<b>\$ 0.97</b>	<b>\$ 2.01</b>	<b>\$ 3.40</b>	<b>\$ 0.85</b>	<b>\$ (1.14)</b>
<b>Distributions<sup>2</sup>:</b>					
From income (excluding dividends)	-	(0.21)	(0.25)	(0.32)	(0.13)
From dividends	-	-	-	-	-
<b>Total distributions</b>	<b>-</b>	<b>(0.21)</b>	<b>(0.25)</b>	<b>(0.32)</b>	<b>(0.13)</b>
<b>Net Assets, end of period<sup>1</sup></b>	<b>\$ 19.99</b>	<b>\$ 19.01</b>	<b>\$ 17.27</b>	<b>\$ 14.08</b>	<b>\$ 13.50</b>

<b>SERIES A - RATIOS AND SUPPLEMENTAL DATA<sup>7</sup></b>					
<b>For the period ended June 30, 2015 and for the years ended December 31,</b>					
	2015	2014	2013	2012	2011
Net Asset Value ("NAV") (000s) <sup>1</sup>	\$46,003	\$43,777	\$50,886	\$44,093	\$50,186
Number of shares outstanding	2,301,727	2,302,938	2,946,850	3,191,673	3,704,149
Management expense ratio <sup>3</sup>	5.39%*	5.28%	7.71%	2.53%	2.57%
Management expense ratio before waivers or absorptions <sup>4</sup>	5.39%*	5.28%	7.81%	2.66%	2.82%
Portfolio turnover rate <sup>5</sup>	20.29%	50.95%	71.86%	80.43%	89.28%
Trading expense ratio <sup>6</sup>	0.04%*	0.13%	0.08%	0.10%	0.23%

**SERIES F - NET ASSETS PER SHARE**

For the period ended June 30, 2015 and for the years ended December 31,

	2015	2014	2013	2012	2011
<b>Net Assets, beginning of period<sup>1</sup></b>	<b>\$ 20.17</b>	<b>\$ 18.12</b>	<b>\$ 14.72</b>	<b>\$ 13.94</b>	<b>\$ 14.97</b>
Increase (decrease) from operations:					
Total revenue	0.26	0.30	0.40	0.44	0.24
Total expenses	(0.47)	(1.02)	(1.30)	(0.22)	(0.22)
Realized gains (losses) for the period	0.79	1.86	0.25	0.16	0.53
Unrealized gains (losses) for the period	0.49	1.06	4.36	0.55	(1.65)
<b>Total increase (decrease) from operations<sup>1</sup>:</b>	<b>\$ 1.07</b>	<b>\$ 2.20</b>	<b>\$ 3.71</b>	<b>\$ 0.93</b>	<b>\$ (1.10)</b>
<b>Distributions<sup>2</sup>:</b>					
From income (excluding dividends)	-	(0.23)	(0.27)	(0.33)	(0.14)
From dividends	-	-	-	-	-
<b>Total distributions</b>	<b>-</b>	<b>(0.23)</b>	<b>(0.27)</b>	<b>(0.33)</b>	<b>(0.14)</b>
<b>Net Assets, end of period<sup>1</sup></b>	<b>\$ 21.29</b>	<b>\$ 20.17</b>	<b>\$ 18.12</b>	<b>\$ 14.68</b>	<b>\$ 13.94</b>

**SERIES F - RATIOS AND SUPPLEMENTAL DATA<sup>7</sup>**

For the period ended June 30, 2015 and for the years ended December 31,

	2015	2014	2013	2012	2011
Net Asset Value ("NAV") (000s) <sup>1</sup>	\$38,382	\$30,892	\$16,981	\$12,083	\$10,597
Number of shares outstanding	1,802,636	1,531,517	937,084	837,836	\$757,781
Management expense ratio <sup>3</sup>	4.47%*	4.08%	7.12%	1.54%	1.49%
Management expense ratio before waivers or absorptions <sup>4</sup>	4.47%*	4.08%	7.22%	1.67%	1.74%
Portfolio turnover rate <sup>5</sup>	20.29%	50.95%	71.86%	80.43%	89.28%
Trading expense ratio <sup>6</sup>	0.04%*	0.13%	0.08%	0.10%	0.23%

**SERIES L - NET ASSETS PER SHARE**

For the period ended June 30, 2015 and for the years ended December 31,

	2015	2014	2013	2012 <sup>†</sup>
<b>Net Assets, beginning of period<sup>1</sup></b>	<b>\$ 13.39</b>	<b>\$ 12.17</b>	<b>\$ 9.99</b>	<b>\$ 10.00</b>
Increase (decrease) from operations:				
Total revenue	0.17	0.17	0.25	0.30
Total expenses	(0.39)	(0.62)	(0.84)	(0.34)
Realized gains (losses) for the period	0.54	1.15	0.16	0.27
Unrealized gains (losses) for the period	0.28	0.65	2.84	0.07
<b>Total increase (decrease) from operations<sup>1</sup>:</b>	<b>\$ 0.60</b>	<b>\$ 1.35</b>	<b>\$ 2.41</b>	<b>\$ 0.30</b>
<b>Distributions<sup>2</sup>:</b>				
From income (excluding dividends)	-	(0.15)	(0.18)	(0.23)
From dividends	-	-	-	-
<b>Total distributions</b>	<b>-</b>	<b>(0.15)</b>	<b>(0.18)</b>	<b>(0.23)</b>
<b>Net Assets, end of period<sup>1</sup></b>	<b>\$ 14.05</b>	<b>\$ 13.39</b>	<b>\$ 12.17</b>	<b>\$ 9.97</b>

**SERIES L - RATIOS AND SUPPLEMENTAL DATA<sup>7</sup>**

For the period ended June 30, 2015 and for the years ended December 31,

	2015	2014	2013	2012 <sup>†</sup>
Net Asset Value ("NAV") (000s) <sup>1</sup>	\$7,736	\$5,617	\$4,056	\$2,052
Number of shares outstanding	550,513	419,395	333,295	209,212
Management expense ratio <sup>3</sup>	5.55%*	5.23%	8.42%	3.71%*
Management expense ratio before waivers or absorptions <sup>4</sup>	5.55%*	5.23%	8.53%	3.85%*
Portfolio turnover rate <sup>5</sup>	20.29%	50.95%	71.86%	80.43%
Trading expense ratio <sup>6</sup>	0.04%*	0.13%	0.08%	0.10%*

<sup>†</sup>Series L commenced operations on February 1, 2012.

\*Ratios have been annualized.

1. The net assets per share shown for June 30, 2015, December 31, 2014 and December 31, 2013 are referenced to net assets attributable to holders of redeemable shares determined in accordance with International Financial Reporting Standards ("IFRS") and are derived from the Portfolio's financial statements. The net assets per share shown for prior periods are referenced to Net Assets determined in accordance with Canadian generally accepted accounting principles ("GAAP") and are derived from the Portfolio's financial statements. The Net Assets presented in the financial statements may differ from the NAV calculated for fund pricing purposes. NAV is calculated using fair value measures as defined by National Instrument 81-106 ("NI 81-106"), where as Net Assets are calculated in accordance with IFRS/GAAP. An explanation of these differences can be found in the notes to the financial statements. Net Assets are based on the actual number of shares outstanding at the relevant time. The increase/decrease from operations is based on the weighted average number of shares outstanding over the financial period. This table is not intended to be a reconciliation of beginning to ending net assets per share.
2. Distributions were reinvested in additional shares of the Portfolio.
3. Management expense ratio is based on total expenses (excluding certain taxes, commissions and other portfolio transaction costs) for the stated year and is expressed as an annualized percentage of daily average net asset value during the year. The management expense ratio is calculated in accordance with Part 15 of NI 81-106 and therefore includes performance fees, which were previously reported separately as dollar amounts.
4. The Manager has absorbed certain expenses or waived certain fees otherwise payable by the Portfolio. The amount of expenses absorbed or waived is determined annually at the discretion of the Manager and the Manager can terminate the absorption or waiver at any time.
5. The portfolio turnover rate can indicate how actively the investment advisor manages the portfolio of investments. A portfolio turnover rate of 100% is equivalent to the Portfolio buying and selling all of its securities in its portfolio once in the course of the year. The higher the portfolio turnover rate in a year, the greater the trading costs payable by the Portfolio in the year and the greater the chance of an investor receiving taxable capital gains in the year. There is not necessarily a relationship between a high turnover rate and the performance of the Portfolio.
6. The trading expense ratio represents total commissions and other portfolio transaction costs expressed as an annualized percentage of daily average net asset value during the period.
7. Ratios and supplemental data, where applicable, are computed using the net asset value of the Portfolio.

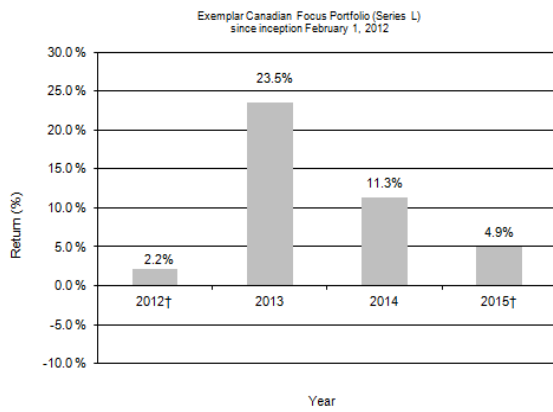
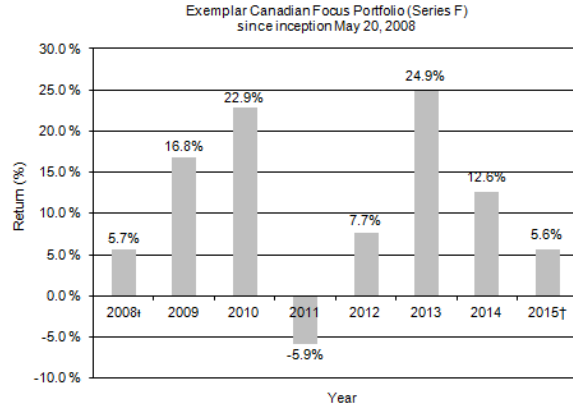
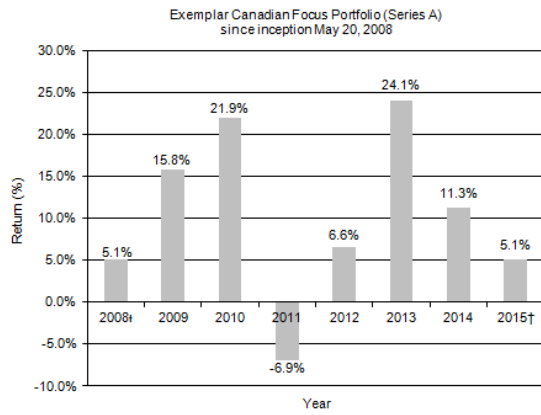
### **Past Performance**

The performance information shown below assumes that all distributions, if any, made by the Portfolio in the periods shown were reinvested in additional shares of the Portfolio. If you hold the Portfolio outside a registered plan, you will be taxed on distributions. Distributions of income the Portfolio earns and capital gains it realizes are taxable in the year received whether received in cash or reinvested in additional shares. No adjustment for potential tax consequences to an investor has been made to the performance information.

The indicated rates of return are historical annual compounded total returns including changes in share value and do not take into account sale, redemption, distribution or other optional charges, that, if applicable, would have reduced returns or performance. An investment in the Portfolio is not guaranteed. Its value changes frequently and how the Portfolio has performed in the past does not necessarily indicate how it will perform in the future.

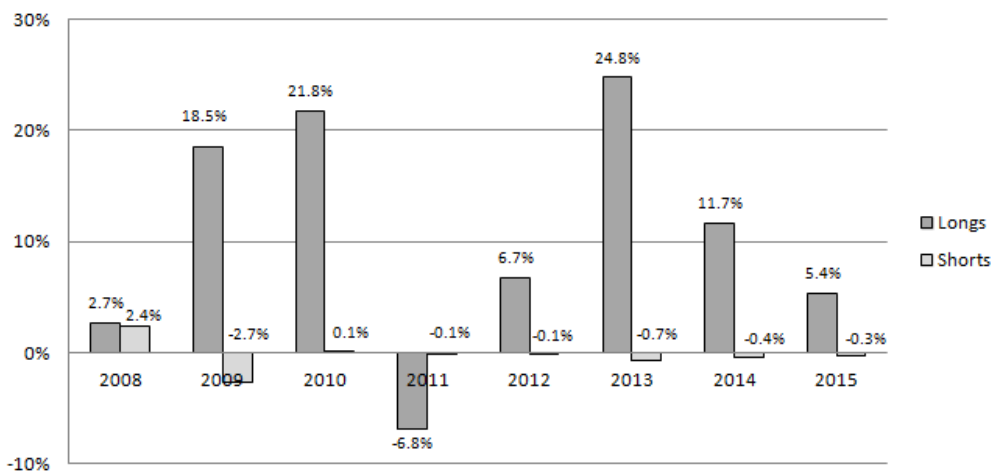
## Year-By-Year Returns

The bar chart below illustrates the Portfolio's annual performance for each of the year(s) shown, and indicates how the Portfolio's performance has changed from year to year. It shows, in percentage terms, how much an investment made on the first day of each financial year would have grown or decreased by the last day of the financial year.



† Returns shown represent a partial year.

The chart below illustrates the Portfolio's annual returns for Series A Shares by long and short holdings:



### Annual Compound Returns (Compound Performance)

The following table shows the annual compound total returns of the Portfolio, and for the S&P/TSX Total Return Index Value ("S&P/TSX TRIV") (a price weighted index of 300 of the largest, most widely-held stocks traded on the Toronto Stock Exchange) for the period ended June 30, 2015. The Relative Performance returns show the performance of the Portfolio as compared to the benchmark S&P/TSX TRIV.

	1 Year	3 Years	5 Years	Annualized Since Inception
Series A	7.4%	15.6%	11.5%	11.3%
Series F	8.4%	16.7%	12.5%	12.3%
Series L	7.1%	15.1%	n/a	11.3%
S&P/TSX TRIV	-1.2%	11.2%	8.3%	2.9%



## Summary of Investment Portfolio as at June 30, 2015

The summary of investment portfolio below includes information regarding the Portfolio as a whole. This summary may change due to ongoing portfolio transactions of the Portfolio and a quarterly update is available by contacting Arrow at 877.327.6048 or by visiting Arrow's website at [www.arrow-capital.com](http://www.arrow-capital.com).

<b>Top 25 Holdings</b>	<b>% of Net Assets</b>	<b>Regional Weightings</b>	<b>% of Net Assets</b>
Cash (net)	19.3%	<b>Long Positions</b>	
Boyd Group Income Fund	6.9%	Canada	70.1%
DHX Media Ltd.	5.1%	U.S.	11.7%
Alimentation Couche-Tard Inc.	5.0%	<b>Short Positions</b>	
Stella-Jones Inc.	2.8%	Canada	(0.2)%
Constellation Software Inc.	2.6%	U.S.	(0.7)%
CCL Industries Inc.	2.6%		
Amaya Inc.	2.3%		
Keyera Corp.	2.2%		
Concordia Healthcare Corp.	2.2%		
MacDonald, Dettwiler and Associates Ltd.	2.0%		
CI Financial Corp.	1.9%		
Canadian Tire Corporation, Limited	1.8%		
Canadian National Railway Company	1.8%		
The Descartes Systems Group Inc.	1.7%		
The Intertain Group Limited	1.6%		
Linamar Corporation	1.4%		
WSP Global Inc.	1.3%		
Element Financial Corporation	1.1%		
Magna International Inc.	1.1%		
Avigilon Corporation	1.1%		
Epsilon Energy Ltd.	1.1%		
Gildan Activewear Inc.	1.0%		
DH Corporation	1.0%		
Valeant Pharmaceuticals International, Inc.	1.0%		
<b>Total</b>	<b>71.9%</b>		
<b>Total Net Assets</b>	<b>\$92,120,210</b>		
		<b>Sector Weightings</b>	<b>% of Net Assets</b>
		<b>Long Positions</b>	
		Basic Materials	1.4%
		Communications	2.3%
		Consumer, Cyclical	24.1%
		Consumer, Non-cyclical	22.2%
		Energy	2.3%
		Financial	5.3%
		Funds	0.6%
		Industrial	13.8%
		Technology	7.6%
		Utilities	2.2%
		<b>Short Positions</b>	
		Energy	(0.0)%
		Funds	(0.2)%
		Industrial	(0.7)%